

# VENTILAYER

**No moisture testing required!**

Patented mesh layer promotes air flow to disperse potentially harmful moisture.



## For Use Under

- Laminate ★★★★★
- Engineered Wood ★★★★★

## Installation Methods

- Floating Floors

**IIC 69**  
6" concrete WITH ceiling assembly

**STC 63**  
6" concrete WITH ceiling assembly



### SUPERIOR SOUND REDUCTION

Recycled fibers absorb sound and keep it from traveling to other rooms. Makes click-together floating floors sound solid underfoot.



### MOISTURE PROTECTION

Recycled fibers allow installation over concrete to "breathe" - managing vapors from becoming bulk moisture. The attached vapor barrier protects the overlying floors from harmful moisture.



### COMPRESSION RESISTANT

Dense recycled fiber structure supports the click-together mechanism and will uphold its supportive configuration under the consistent traffic of the overlying floor.



### VENTILATION AND MOISTURE DISSIPATION

A 3D matrix attached to recycled materials elevates to promote ventilation and moisture dissipation.



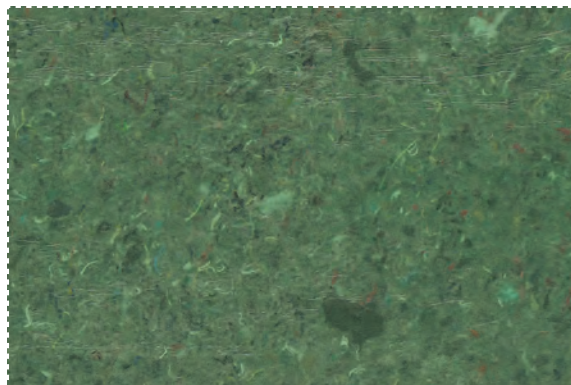
### MADE FROM RECYCLED MATERIAL

A patented manufacturing process repurposes post-industrial and post-consumer materials into high-performance underlayment.



### CERTIFIED CLEAN AND SAFE INDOOR AIR QUALITY

No VOC's (Volatile Organic Compounds) or off-gassing from materials.



## INSTALLATION METHODS

### FLOATING FLOORS

1. Roll out underlayment vapor barrier side up and butt seams together
2. Tape seams with moisture barrier seam tape
3. Click & lock floating floors over the top according to manufacturer

\*ENSURE TO READ THE COMPLETE INSTALLATION INSTRUCTIONS BEFORE INSTALLATION

### ENVIRONMENTAL ATTRIBUTES

- VentiLayer contains **64%** post industrial/pre-consumer fibers. VentiLayer is LEED™ compliant and will contribute to MRC4.1-4.2 credits

### LIMITATIONS

VentiLayer is not suitable for use as underlayment for:

- Ceramic tile
- Sheet-vinyl

### APPROVED SUBSTRATES

- Concrete and masonry blocks
- Cement backer units (CBU)
- Cementitious screeds, leveling coats and mortar beds
- Waterproofing and crack-isolation membranes
- Wood, plywood, or OSB subfloors that meet NFWA Subfloor Guidelines and Specifications, and meet applicable building codes.
- Cement terrazzo floors
- Vinyl composition tile (VCT) or non-cushioned sheet vinyl provided the existing floor covering is still adhered tightly to a level, even and structurally solid subfloor, and is free from excessive wax, grease or sealants

### PACKAGING

3' x 33.4' (100 sq ft) do-it-yourself size rolls

Rolls per pallet: 30      Weight per pallet: 400lbs

Pallets per truck: 64      Rolls per truck: 1920

6' x 60' (360 sq ft) contractor sized rolls available.

## TECHNICAL DATA

**Physical Properties:** Blended synthetic fibers

Weight ..... 34.8 oz / sq yd (3.87 oz / sq ft)

Thickness ..... 5mm

Density ..... 13.5 lbs / ft<sup>3</sup>

R-Value (@0.125") ..... 0.65 hr-ft<sup>2</sup>-degF/Btu (5.90/ inch)

**Flammability** Meets or exceeds Federal Flammability Standard: ASTM E84 Steiner Tunnel Test.

**Volatile Organic Compounds (VOC)** Tested for 81 different off-gas compounds in accordance with CA 01350. Passed to the level of Collaborative for High Performance Schools (CHPS) and Office Spaces.

### SOUND PROPERTIES

#### IMPACT SOUND TRANSMISSION

The method is designed to measure the impact sound transmission performance of a floor-ceiling assembly in a controlled laboratory environment.

IIC	Flooring	Sub-floor
69	Floating engineered wood	6" concrete with ceiling assembly

#### SOUND TRANSMISSION LOSS

The sound-insulating property of a partition element is expressed in terms of the sound transmission loss.

STC	Flooring	Sub-floor
63	Floating engineered wood	6" concrete with ceiling assembly

#### Moisture Absorption Properties

Moisture Absorption Approx. 650% by weight

**Moisture Statement.** VentiLayer will absorb and allow dispersion throughout the product of water moisture in accumulations not exceeding one gallon per 24 hrs per 300 square feet of product and/or allowed to continue to accumulate for more than 7 days. Actual in-house tests have shown results up to 5 times that amount.

